

HOT TAP & LINE STOP SERVICE



IN-LINE WELDING

SCOPE

- Provide any In-Line Welding service under codes: **B31.3 – B31.4 – B31.8** according with **API1104 & ASME Section IX**

SOURCE

- Trained and certified in-house crew to execute any In-Line Welding Service.
- Senior Welding Engineer – Certified by:
 - ✓ API
 - ✓ AWS
 - ✓ ASME



TRAINING PROGRAM

- Program has been certified by SGS
- Welders and supervisors have been trained in:
 - ✓ API 1104
 - ✓ ASME Section IX
 - ✓ API 577
 - ✓ API 2201



TECH DOCUMENTS

- Complete set of **PQR & WPS** to execute any In-Line Welding procedure under **API 1104** or **ASME Section IX**
- Welding Procedures WPS Available up to:
 - ✓ Materials 75.000psi – Yield Strength
 - ✓ Any Diameter
 - ✓ Any Thickness



TECHNICAL SUPPORT

- Welding engineering department provide:
 - ✓ Welding Assessment
 - ✓ Welding Method Statement
 - ✓ Safety Welding Pressure Calculation
 - ✓ Heat Input
 - ✓ Cooling Rate
 - ✓ Hydrotest Pressure Calculation

HOT TAPPING SERVICE

SCOPE

- Provide any scheduled or emergency Hot Tap service from 3/8" to 48"

MAX. OPERATING CONDITIONS

Max. Working Pressure	1480PSI @ 100°F
Max. Working Temperature	700°F @ 700 PSI
Max. Flow	Posy-Latch Pilot Drills ✓ Gas: 30.4 m/sec ✓ Liquid: 15.2 m/sec



APPLICABLE

PIPE MATERIAL	FLUID
Stainless Steel	Natural Gas
Carbon Steel	Nitrogen
Cast Iron	Steam
Concrete	Crude
Copper	Water
PVC	Fuel
	PGL
	Oil

SOURCE

- Complete set of equipment up to 24" at Jubail - KSA
- Equipment made 100% in US
- International Master Technician – 30 years of experience
- Trained and certified local crew

TECHNICAL SUPPORT

- Hot Tapping engineering department provide:
 - ✓ Hot Tap Assessment
 - ✓ Hot Tap Customized Procedure
 - ✓ Equipment Data Sheet
 - ✓ Hot Tap Calculations
 - ✓ Execution Report



LINE STOP SERVICE

SCOPE

- Provide any Line Stop service from 3" to 48"

MAX. OPERATING CONDITIONS

Max. Working Pressure	1480PSI
Max. Working Temperature	250°C
Max. Flow	Posy-Latch Pilot Drills ✓ Gas: 28 m/sec ✓ Liquid: 15 m/sec

APPLICABLE

PIPE MATERIAL	FLUID
Stainless Steel	Natural Gas
Carbon Steel	Nitrogen
Cast Iron	Steam
Concrete	Crude
Copper	Water
PVC	Fuel
	PGL
	Oil



SOURCE

- Complete set of equipment up to 20" at Jubail – KSA
- Equipment made 100% in US
- International Master Technician – 30 years of experience
- Trained and certified local crew

TECHNICAL SUPPORT

- Hot Tapping engineering department provide:
 - ✓ Line Stop Assessment
 - ✓ Line Stop Customized Procedure
 - ✓ Equipment Data Sheet
 - ✓ Line Stop Calculations
 - ✓ Execution Report



FITTING

Type: Hot Tap - Line Stop - Threaded

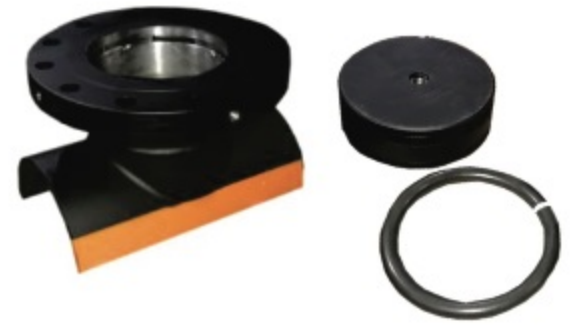
Size: 4" – 48"

Available: ANSI150/300/600/900

Design Codes: B31.1/B31.3/B31.4/B31.8

Lock O-Ring: Buna N, Viton, Aflax, EPDM

NDE Test: X-Ray Report



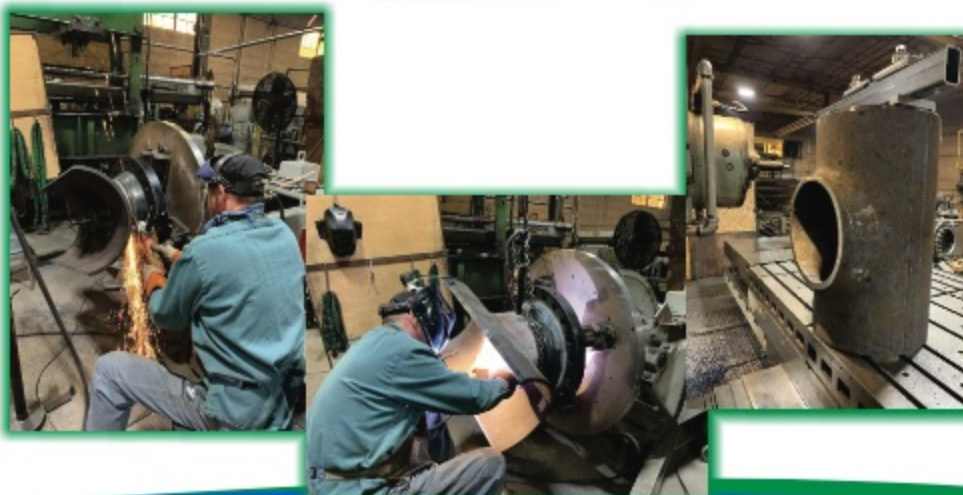
HOT TAP	LINE STOP	THREADED	Image Gallery		
Standard 3Way Nozzle Spherical 45° Inclination	Standard 3Way Spherical	Threadlock Weldolet 3Way TOR 2" TOR 3"			
	Lock O-Ring ✓ Standard ✓ Scarfed Nipple				

SOURCE

- ✓ Design 100% in USA
- ✓ Fabrication in-house – Jubail – KSA
- ✓ Customized Fittings – Made 100% in our plant in USA

TECHNICAL SUPPORT

- ✓ Design Package
- ✓ Calculation Package
- ✓ MTR's
- ✓ Xray - Report
- ✓ Hydrotest – Available





AMERICA TRADE LLC

www.americatrade.co

Boston - USA - Ph: +1 617 800 7502

Jubail - KSA - Ph: +966 53 934 9638

ANABEEB PIPELINE CO

www.anabeeb.com

Jubail - KSA - Ph: +966 50 394 3137

UAE - Ph: 971 2 692 8900

Qatar - Ph: +974 4450 3716

Kuwait - Ph: +96522391600