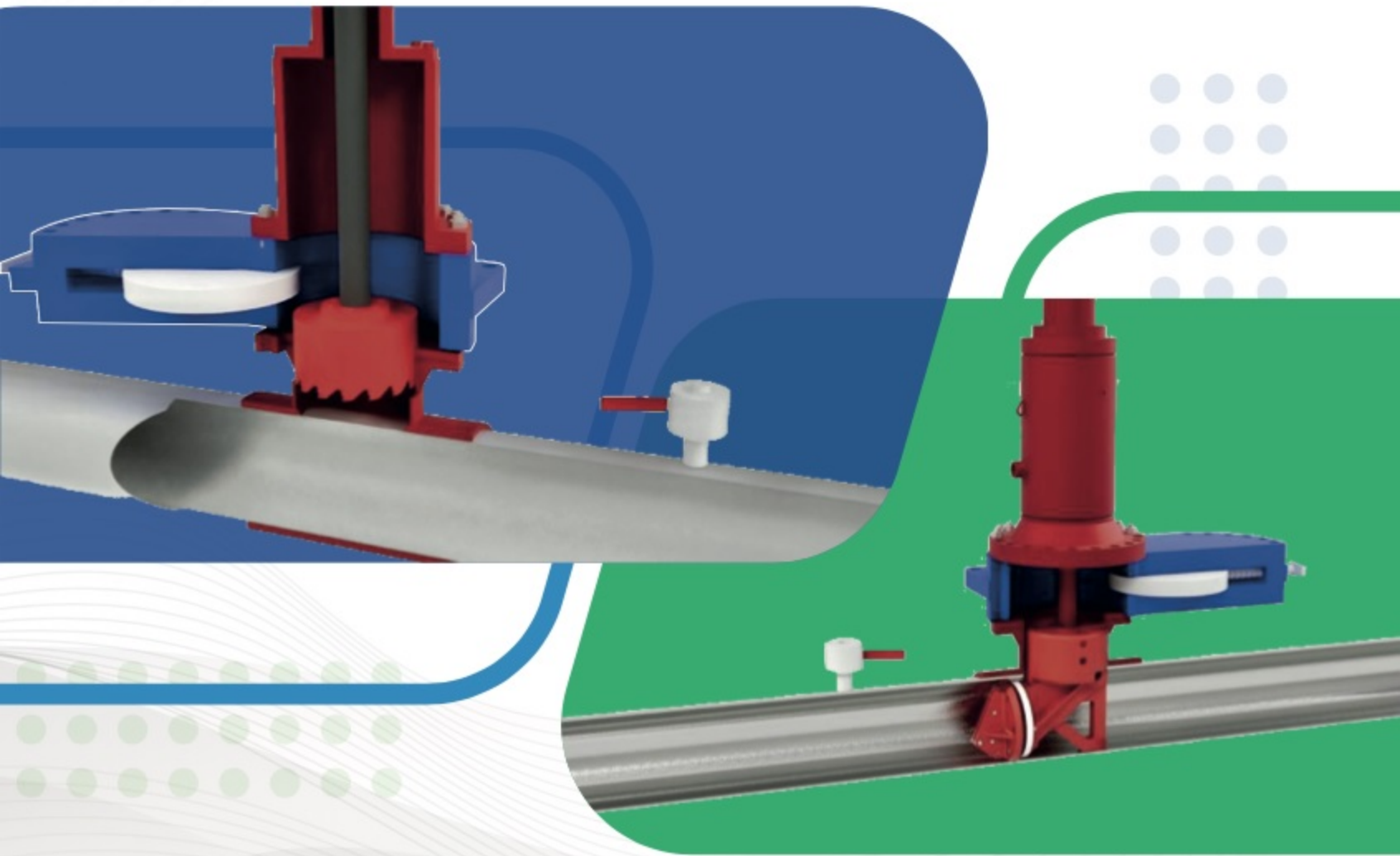


HOT TAP LINE STOP EQUIPMENT

More than 35 years of experience
manufacturing heavy duty
Pipeline Equipment.



Designed & Manufactured 100% in USA



HOT TAPPING EQUIPMENT

HOT TAPPING MACHINES - ANSI 600

Our set of standard pressure equipment offers the following technical parameters

* Tapping Range: 3/8" to 60"

* Max. Working Pressure: ----- 1480PSI @ 100°F

* Max. Operating Temperature:

Standard Packing: ----- 300°F @ 700PSI

Severe Packing: ----- 700°F @ 700PSI

REF RANGE	E4	206	E312	E320	E424	E1448	E2460
TRAVEL BAR	3/8" - 4"	2" - 6"	3" - 12"	3" - 20"	4" - 24"	14" - 48"	24" - 60"
DIAMETER BAR	12", 18", 24" & 30"	30"	42"	66"	86"	110", 120" & 130"	120" & 160"
	1.125"	1.750"	2.500"	2.500"	3.000"	4.000"	5.000"

EQUIPMENT E4 - ANSI600

Work Range: 3/8" - 4" / Travel Bar: 12", 18", 24" & 30"



EQUIPMENT E312 - ANSI600

Work Range: 3" - 12" / Travel Bar: 42"



EQUIPMENT E320 - ANSI600

Work Range: 3" - 20" / Travel Bar: 66"



EQUIPMENT E424 - ANSI600

Work Range: 4" - 24" / Travel Bar: 86"



EQUIPMENT E1448 - ANSI600

Work Range: 14" - 48" / Travel Bar: 110", 120" & 130"



EQUIPMENT E2460 - ANSI600

Work Range: 24" - 60" / Travel Bar: 66"



HOT TAPPING MACHINES - ANSI 900 - EQB

Our set of high pressure equipment offers the following technical parameters

- * Tapping Range: 3/8" to 60"
- * Max. Working Pressure: ----- 2220PSI @ 100°F
- * Max. Operating Temperature:
Standard Packing: ----- 200°F @ 700PSI
Severe Packing: ----- 400°F @ 700PSI

REF RANGE TRAVEL BAR DIAMETER BAR	E4-EQB	E320 - EQB	E1448 - EQB	E2460 - EQB
	3/8" - 4"	3" - 20"	14" - 48"	24" - 60"
	30"	66"	110", 120" & 130"	120" & 160"
	1.125"	2.500"	4.000	4.500"

EQUIPMENT E4 - ANSI900

Work Range: 3/8" - 4" / Travel Bar: 12", 18", 24" & 30"



EQUIPMENT E320 - ANSI900

Work Range: 3" - 20" / Travel Bar: 66"



EQUIPMENT E1448 - ANSI900

Work Range: 14" - 48" / Travel Bar: 110", 120" & 130"



EQUIPMENT E2460 - ANSI900

Work Range: 24" - 60" / Travel Bar: 120" & 160"



HOT TAPPING MACHINES - SUBSEA - ANSI 900

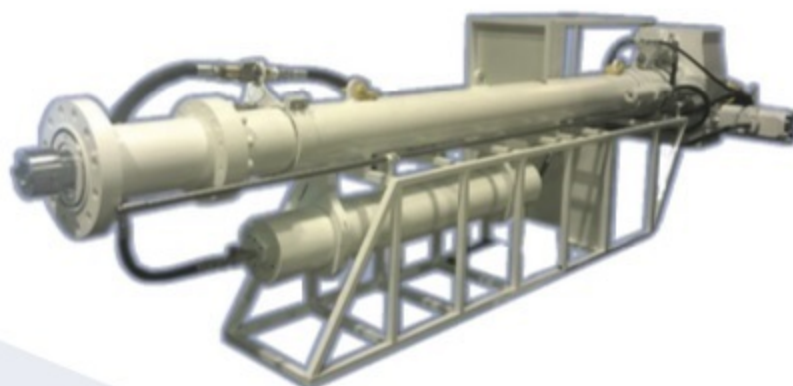
Our set of Subsea equipment offers the following technical parameters

- * Tapping Range: 3" to 48"
- * Max. Working Pressure: ----- 2220PSI @ 100°F
- * Max. Operating Temperature:
Standard Packing: ----- 200°F @ 700PSI
- * Max. Depth Work: ----- 300ft - 90mts

REF RANGE TRAVEL BAR DIAMETER BAR	E320 SS	E1448 SS
	3" - 20"	14" - 48"
	66"	110", 120" & 130"
	2.500"	4.000"

EQUIPMENT E1448 - SUBSEA

Work Range: 14" - 48" / Travel Bar: 110", 120" & 130"



EQUIPMENT E320 - SUBSEA

Work Range: 3" - 20" / Travel Bar: 66"

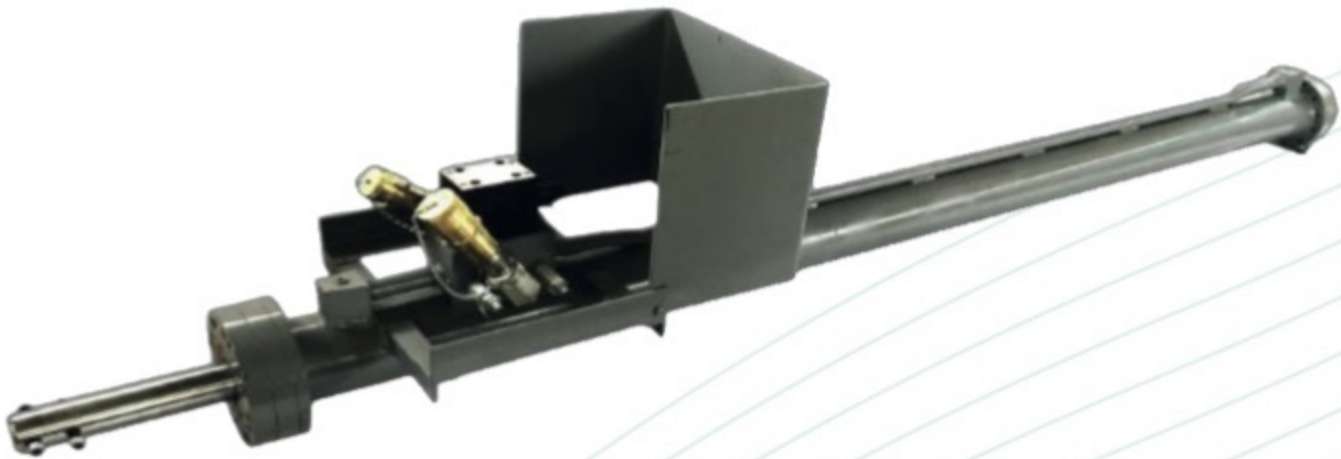


LINE STOP ACTUTORS - ANSI 600 & ANSI 900

ENR Line Stop Actuators are available under the following technical parameters

- * Working Range: 3" to 48"
- * Max. Working Pressure: ----- 1480PSI or 2220PSI
- * Max. Operating Temperature: ----- 480 °F (250 °c)

REF RANGE	LSA-312	LSA-1420	LSA-2234	LSA-3648
TRAVEL BAR	3" - 12"	14" - 20"	22" - 34"	36" - 48"
DIAMETER BAR	72"	103" / 140"	140"	140"
	2.000"	3.500"	4.000"	5.000"
MOP	2220 PSI	2220 PSI	2220 PSI	2220 PSI



LINE STOP ENR

JACK SCREWS

ENR Line Stop Actuators are available from 3" to 20"
Available in 500PSI & 850PSI

REF RANGE	JS-0312-500	JS-0312-850	JS-1420-850
TRAVEL BAR	3" - 12"	3" - 12"	14" - 20"
DIAMETER BAR	50", 60" & 72"	50", 60" & 72"	85" & 103"
	2.000"	2.000"	3.500"
MOP	500 PSI	850 PSI	850 PSI



LINE STOP ACCESORIES



SANDWICH VALVE

- * Made in USA 100%
- * Available: 4" to 48"
- * Manual Valve: 4" – 20" Diameter
- * Hydraulic Valve: 22" – 48" Diameter
- * Working Pressure: ANSI 150/300/600/900
- * Available: Stainless Steel



PIVOTING PLUGGING HEAD

- * Made in USA 100%
- * Available: 4" to 48"
- * Working Pressure:
 - * ANSI 600 - 1480PSI
 - * ANSI 900 - 2220PSI



LINE STOP HOUSING

- * Made in USA 100%
- * Available: 3" to 48"
- * Working Pressure: ANSI 150/300/600/900
- * Available: 3Way – Internal Bypass



LINE STOP CUTTERS

- * Made in USA 100%
- * Available: 3" to 48"
- * Materials: Carbide, HSS & Tungsten



PILOT DRILLS

- * Made in USA 100%
- * Available: 3" to 60"
- * Materials: HSS & Tungsten
- * Interchangeable Bits



SEALING ELEMENTS

- * Made in USA 100%
- * Available: 2" to 48"
- * Materials: Buna N, Viton, Aflax, EPDM



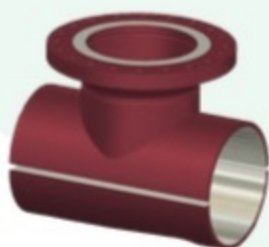
HOT TAP FITTINGS

TYPES

- Hot Tap Fitting Standard
- Hot Tap Fitting 3Way
- Hot Tap Fitting Nozzle
- Hot Tap Fitting Spherical

FEATURES

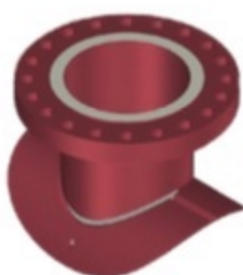
- Size Range: 3" to 60"
- Pressure Range: ANSI 150/300/600/900
- Flanges Available: RF or RTJ
- Welding examined by radiography
- Fittings available for 45° Deg
- Complete traceability of materials
- Compatible with all the Hot Tap machines models
- Fittings are design according to:
 - ASME B31.1
 - ASME B31.3
 - ASME B31.4
 - ASME B31.8



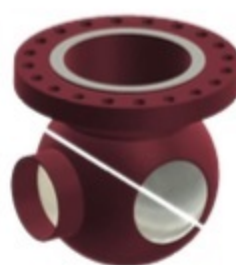
HOT TAP FITTING
STANDARD



HOT TAP FITTING
3 WAY



HOT TAP FITTING
NOZZLE



HOT TAP FITTING
SPHERICAL

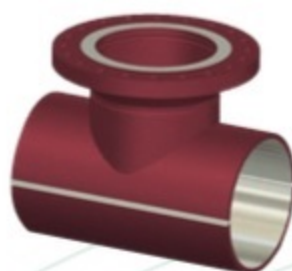
LINE STOP FITTINGS

TYPES

- *Line Stop Fitting Standard
- * Line Stop Fitting 3Way
- * Line Stop Fitting Spherical

FEATURES

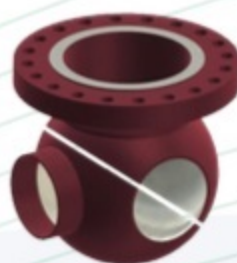
- * Size Range: 3" to 48"
- * Pressure Range: ANSI 150/300/600/900
- * Line Stop Fittings are available with:
 - * Completion Plug Standard
 - * Completion Plug & Scarfed Nipple
 - * Flow Through Plug
- * O-Ring Available:
 - * Buna N
 - * Viton
 - * EPDM
- * Flanges Available: RF or RTJ
- * Welding examined by radiography
- * Complete traceability of materials
- * Compatible with all the Hot Tap machines models



LINE STOP FITTING
STANDARD



LINE STOP FITTING
3 WAY



LINE STOP FITTING
SPHERICAL



COMPLETION PLUG
& SCARFED NIPPLE